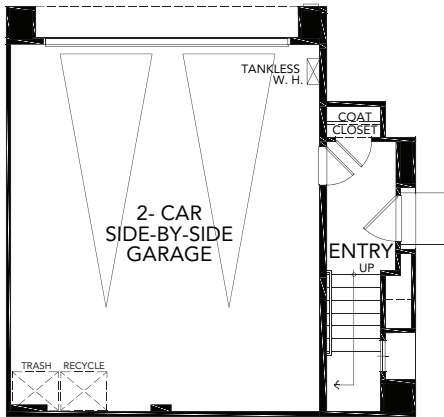
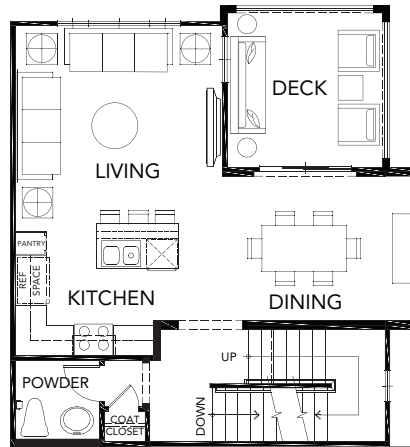




PLAN 1 A, The Griffin
 2 Beds, 2.5 Baths
 2-Car Garage
 1,326 Sq Ft
 Preliminary Floor Plan



LEVEL 1

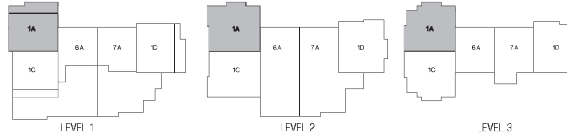


LEVEL 2

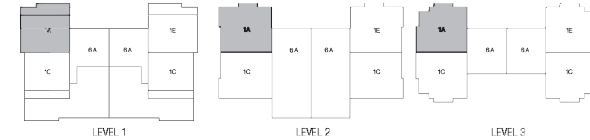


LEVEL 3

KEY PLAN - 5 PLEX



KEY PLAN - 6 PLEX



At the corner of Walnut St. & Sausalito St., Los Alamitos, CA 90720 | (562) 370-9501 | dpilon@theolsonco.com, elight@theolsonco.com | OakWalkHomes.com

Floorplans and renderings are artist's conception based on preliminary information. Some homesites may be pre-plotted for specific variations or options. Please consult your Home Advisor for details. In an effort to improve our homes, Olson Homes reserves the right to change features, prices or plans without notice. Windows, doors, porches, patios and decks vary per elevation and per homesite location. Floorplan measurements are approximate. Prices and availability are subject to change without notice. BRE #01877641. CSLB #939166 Olson Urban Housing, L.P.

